



Level 5-SAMPLE ANSWER KEY

National Federation of Music Clubs – Festival Theory Test SAMPLE - LEVEL 5 - SAMPLE

Name: _____ Date: _____ ID: _____ Rating: _____
(Superior 90-100, Excellent 80-89.5, Satisfactory 70-79.5, Fair 60-69.5, Needs Improvement <60)

1. For each measure below, draw the type of note or rest indicated below each measure. **1 pt. each measure (5)**
Remember the stem rule. **Wrong stems or dots = -1/2 pt. off.** **-1/2 if one of the pairs of notes is wrong.**

A. **or** B. **or** C. **or** D. E. **or**

8th note on G 2 16th notes on E & B (beamed) Dotted quarter note on F Sixteenth rest 2 16th notes on C & F (flags)



2. For each given note, draw a note on the NEXT LINE OR SPACE as indicated below each measure. **(5)**
Use accidentals if needed. Do not alter the given note. **-1 pt. each measure**

Half step BELOW Whole step ABOVE Half step ABOVE Enharmonic ABOVE Whole step BELOW

3. For each measure below: **-1 pt. each measure**
A. Name the interval on the line below each measure. (Ex: 2nd, 3rd, 4th, 8ve, etc.) **-1 pt. each box (5)**
B. Above each measure, circle H or M to indicate if the interval is harmonic (H) or melodic (M). **(5)**

Circle: H or M H or M H or M H or M H or M

7th 2nd 4th 6th 3rd

4. For each measure below: **-1 pt. each measure**
A. Draw a note that is an octave higher than the given note. Use ledger lines if needed. **(5)**
B. Name each note on the line below each measure. **-1 pt. each blank (5)**

C F D F E

Level 5-SAMPLE ANSWER KEY

5. For each measure below, write the top number of the time signature.

-1 pt ea measure (3)



6. For the rhythm below:

A. Draw bar lines where needed. Look at the time signature.

-1 pt ea bar line (3)

B. Draw a double bar line where needed.

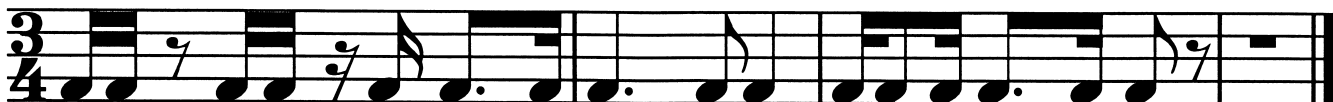
-1 pt dbl bar line (1)



7. Write numbers below each note or rest as you would count aloud.

-1 pt ea measure (4)

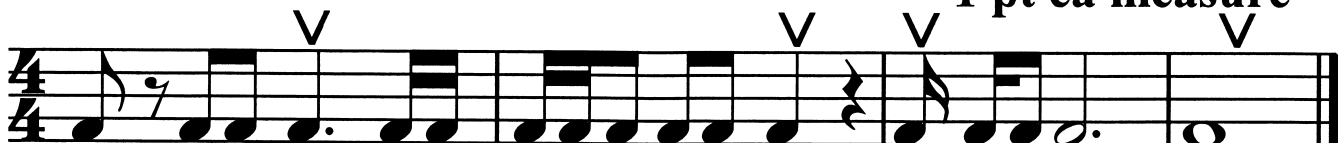
The numbers & syllables directly under ea note/rest are what is required.



1 e & 2 e & a 3e&a 1&2&3 1 e&a 2e&a 3 & 1-2-3

8. Below each arrow, draw ONE NOTE to complete each measure.

-1 pt ea measure (4)



9. Below each arrow, draw ONE REST to complete each measure. Do not use dotted rests.

-1 pt ea measure (4)



Level 5-SAMPLE ANSWER KEY

SAMPLE - Level 5 - Page 3

Name: _____



10. For each major scale below:

A. Mark the half steps with slurs where they would occur in a major scale. (4)

B. Draw sharps or flats as needed before the notes to make a major scale in the given keys. (8)

- 1/2 pt. each half step
-2 pts. each scale (no partial credit)

Eb Major

B Major

Db Major

E Major

-1 pt. each sharp

-1 pt. each flat

-1 pt. each natural

11. Draw a sharp in front of the following notes. (2)

F# E#

12. Draw a flat in front of the following notes. (2)

Db Ab

13. Draw a natural in front of the following notes. (2)

Eⁿ or E Bⁿ or B

14. Name each note on the line below each measure above. Use the accidental in the name if needed. (6)

-1 pt. each note name



Level 5-SAMPLE ANSWER KEY

SAMPLE - Level 5 - Page 4

15. On the staff below:

- A. Draw each major key signature as named below each measure. **-1 pt. each measure** (5)
 - B. After each key signature, draw the tonic triad in root position, as indicated by the Roman numeral. (5)
- 1 pt. each I triad**

Db Major I B Major I Eb Major I F Major I Ab Major I

-1 pt. each key signature

16. For each measure below:

- A. Draw the key signature with the number of sharps or flats as indicated above each measure. **No partial credit** (5)
- B. Name each major key on the line below each measure. **-1 pt. each blank** (5)

2 sharps 4 sharps 5 flats 2 flats 3 sharps

D Major E Major Db Major Bb Major A Major

-1 pt. each blank

17. Write the letter of the correct definition in the blank to the left of each musical term. (7)

- | | |
|-------------------------------|---|
| <u>E</u> dissonant | A. a repeated rhythmic or melodic idea, usually short and very distinctive |
| <u>B</u> consonant | B. sounds that blend well together |
| <u>F</u> <i>D. C. al fine</i> | C. scale degree one |
| <u>D</u> <i>D. S. al fine</i> | D. Go back to the sign and play to <i>fine</i> . |
| <u>C</u> Tonic | E. sounds that do not blend well together; clashing |
| <u>A</u> motive | F. Go back to the beginning and play to <i>fine</i> . |
| <u>G</u> enharmonic spelling | G. two notes that have the same pitch and sound the same, but are spelled differently |