



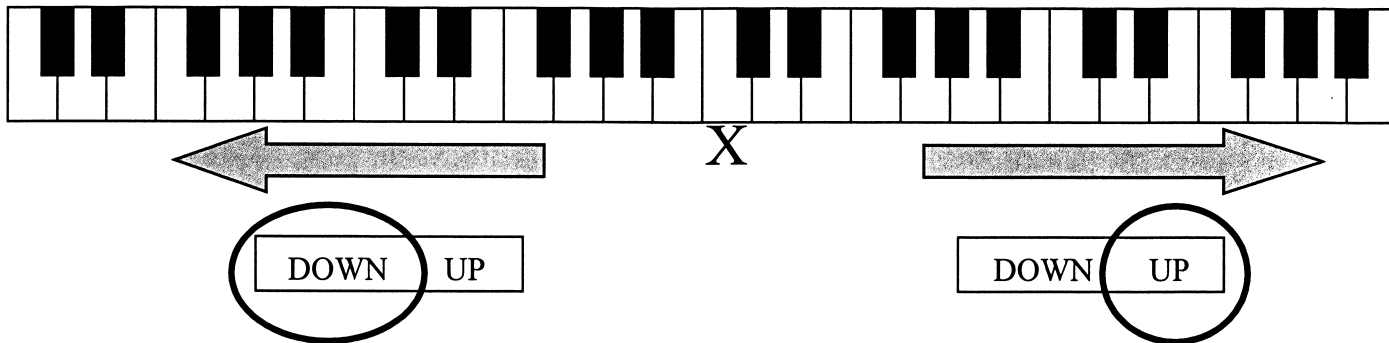
Level B-SAMPLE-ANSWER KEY

National Federation of Music Clubs – Festival Theory Test SAMPLE - LEVEL B - SAMPLE

Name: _____ Date: _____ ID: _____ Rating: _____

(Superior 90-100, Excellent 80-89.5, Satisfactory 70-79.5,
Fair 60-69.5, Needs Improvement <60)

1. Starting on X, under the keyboard below, move your finger the direction each arrow is pointing. (2)
 A. Circle DOWN below the arrow that is pointing DOWN the keyboard. - 1 pt. each
 B. Circle UP below the arrow that is pointing UP the keyboard.

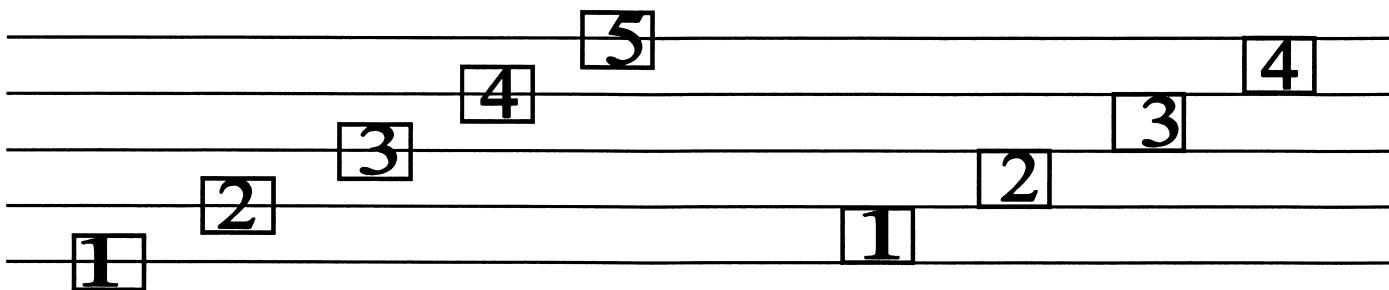


2. Write the letter name that steps up from the given letter. - 2 pts. each (10)
 E F A B C D G A F G

3. Write the missing letter of each music alphabet in the blank in each box. - 2 pts. each (6)

B C D E F G <u>A</u>	A B D E F G <u>C</u>	A B C D E G <u>F</u>
-------------------------	-------------------------	-------------------------

4. Number the lines and spaces of the staff inside each box. - 2 pts. each (18)

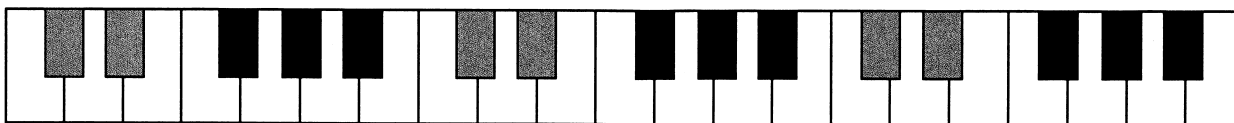


Level B-SAMPLE-ANSWER KEY

SAMPLE - Level B - page 2

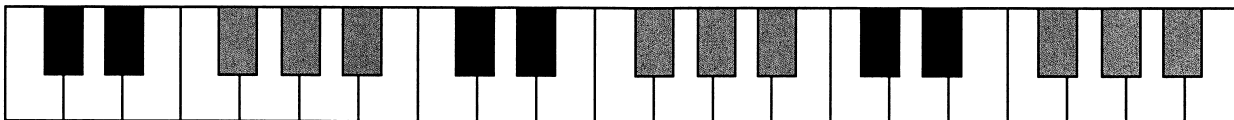
- 1 pt. each group⁽³⁾

5. Color in the keys to make groups of two black keys.



6. Color in the keys to make groups of three black keys.

- 1 pt. each group⁽³⁾



7. Circle the number of the line the note is on.

- 2 pts. each⁽¹⁰⁾

1 2 3 4 5	1 2 3 4 5	1 2 3 4 5	1 2 3 4 5	1 2 3 4 5

8. Circle the number of the space the note is on.

- 2 pts. each⁽⁸⁾

1 2 3 4	1 2 3 4	1 2 3 4	1 2 3 4

9. Write one count below each quarter note or quarter rest.

-1 pt. each measure⁽²⁾

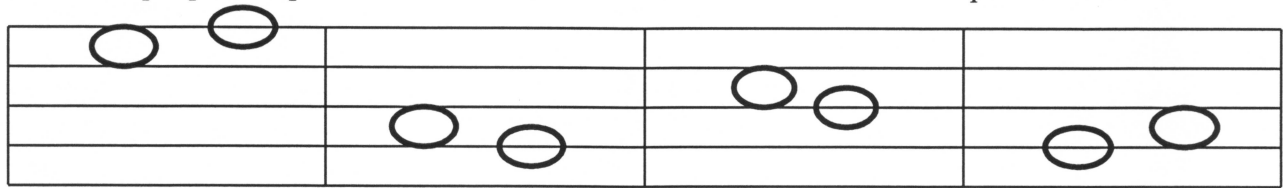
1	1	1	1		1	1	1	1

Don't count off if student writes 1234 or 1-2-3-4.

Name: _____

- 2 pts. each (8)

10. Circle Step Up or Step Down to show how the second note moves in each pair of notes.



Step Up
Step Down

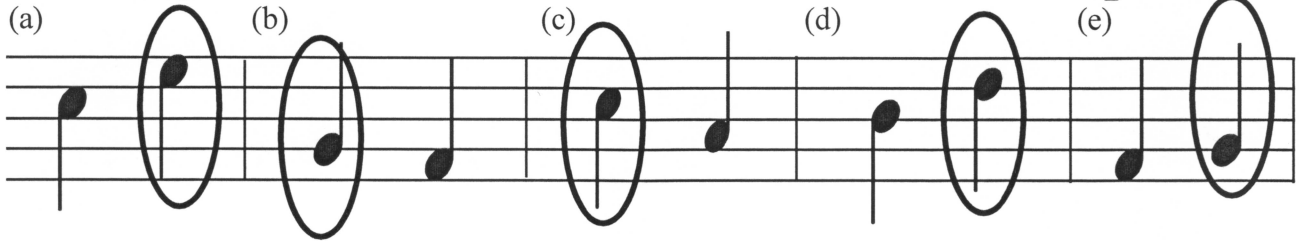
Step Up
Step Down

Step Up
Step Down

Step Up
Step Down

11. Circle the highest note in each measure.

- 3 pts. each (15)



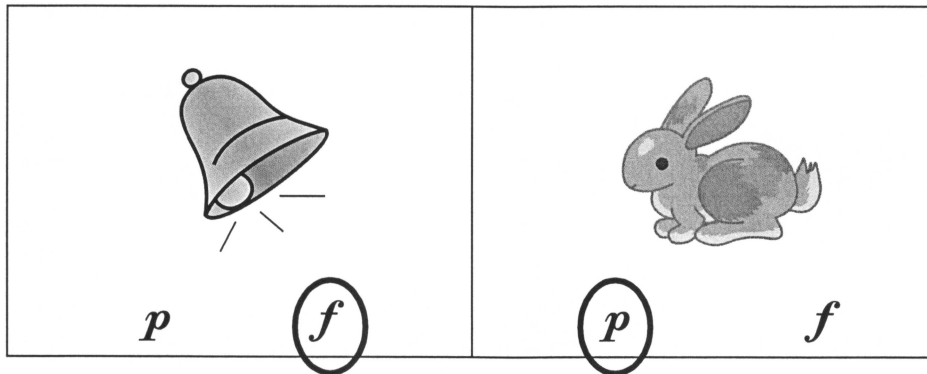
12. For each picture below:

A. Circle *f* if the picture is something that sounds loud.

- 2 pts. (2)

B. Circle *p* if the picture is something that sounds soft.

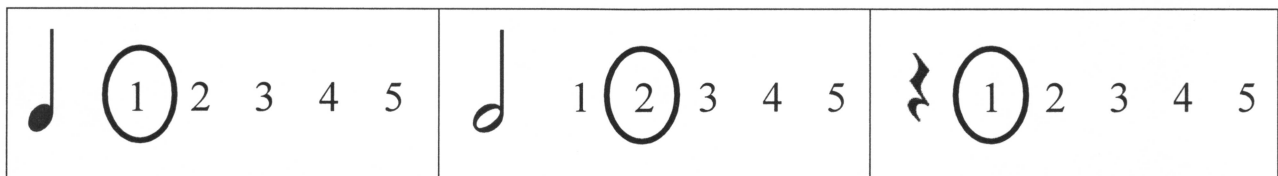
- 2 pts. (2)



- 2 pts. each

13. In each box, circle one number that shows how many beats each given note or rest receives.

(6)

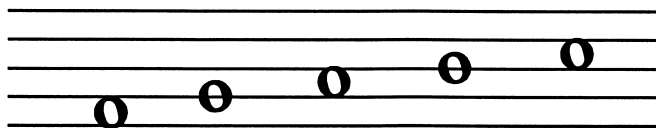


Level B-SAMPLE-ANSWER KEY

SAMPLE - Level B - page 4

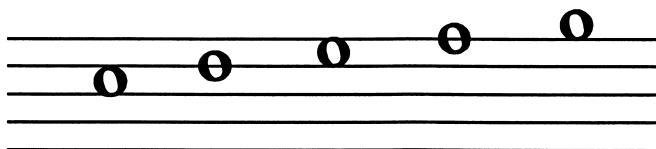
14. Circle DOWN or UP to show the direction each group of notes is moving on the staff. **- 1 pt. each** (5)

(a)



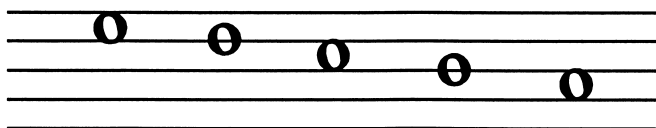
DOWN	UP
------	----

(b)



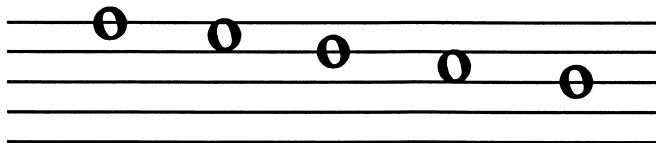
DOWN	UP
------	----

(c)



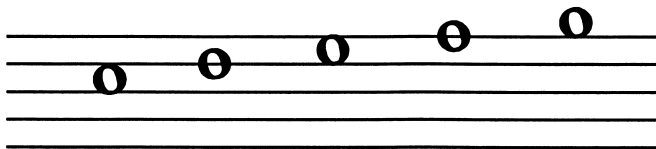
DOWN	UP
------	----

(d)



DOWN	UP
------	----

(e)



DOWN	UP
------	----