



Level A-SAMPLE-ANSWER KEY

National Federation of Music Clubs – Festival Theory Test SAMPLE - LEVEL A - SAMPLE

Name: _____ Date: _____ ID: _____ Rating: _____

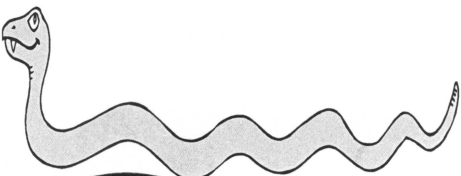

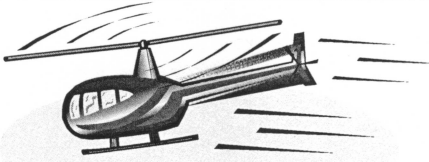
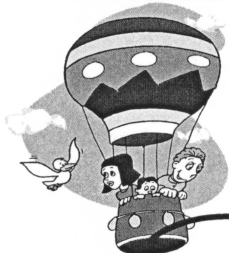
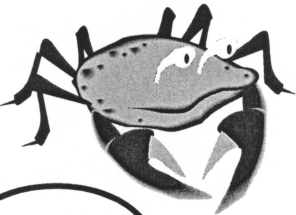
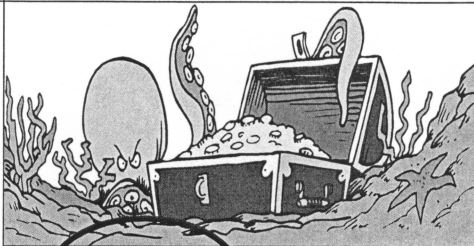
(Superior 90-100, Excellent 80-89.5, Satisfactory 70-79.5, Fair 60-69.5, Needs Improvement <60)

1. For each picture below:

A. Circle HIGH if the picture is something that is high.

B. Circle LOW if the picture is something that is low.

- 2 pts. each (12)

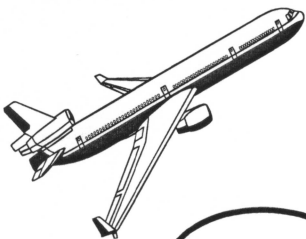



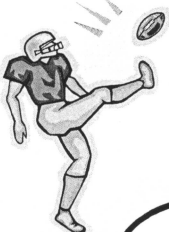
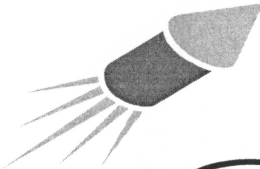
 <p>LOW HIGH</p>	 <p>LOW HIGH</p>	 <p>LOW HIGH</p>
 <p>LOW HIGH</p>	 <p>LOW HIGH</p>	 <p>LOW HIGH</p>

2. For each picture below:

A. Circle UP if the picture is something going up.

B. Circle DOWN if the picture is something going down.

- 2 pts. each (12)

 <p>DOWN UP</p>	 <p>DOWN UP</p>	 <p>DOWN UP</p>
 <p>DOWN UP</p>	 <p>DOWN UP</p>	 <p>DOWN UP</p>

Level A-SAMPLE-ANSWER KEY

SAMPLE - Level A - page 2

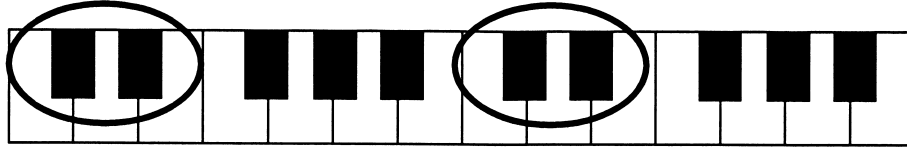
3. Circle only the complete music alphabet in the group of letters below.

- 1 pt. (1)



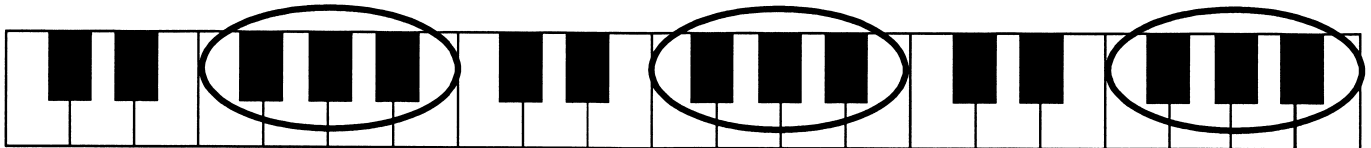
4. On the piano keyboard below, circle each group of two-black-keys.

- 2 pts. each (4)



5. On the piano keyboard below, circle each group of three-black-keys.

- 2 pts. each (6)



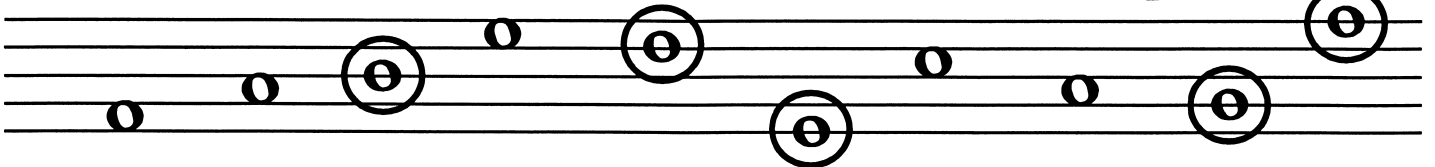
6. Below each picture, circle the number of objects in each box.

- 4 pts. each (16)

 1 2 3 4 5	 1 2 3 4 5	 1 2 3 4 5	 1 2 3 4 5
----------------------	----------------------	----------------------	----------------------

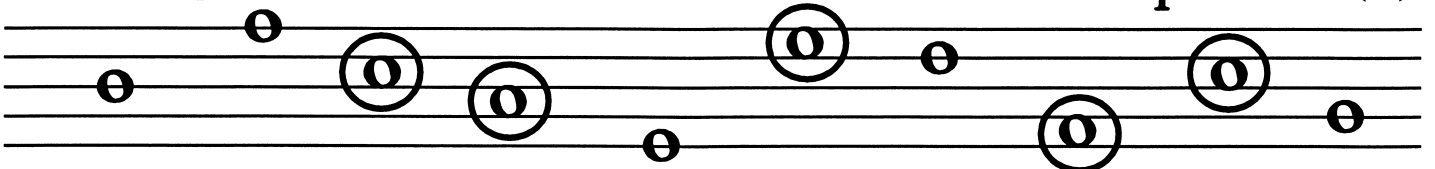
7. Circle the line notes.

- 2 pts. each (10)



8. Circle the space notes.

- 2 pts. each (10)



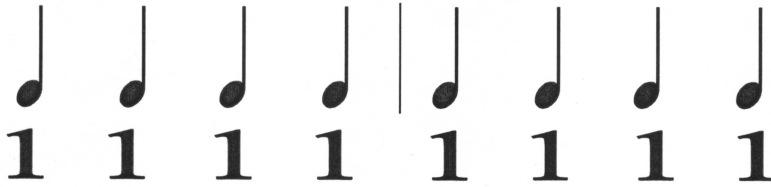
Level A-SAMPLE-ANSWER KEY

*Level A – page 3

Name: _____

9. Write the number one below each quarter note.

- 1 pt. each (8)



Don't count off if they have 1234 or 1-2-3-4. Dashes not required.

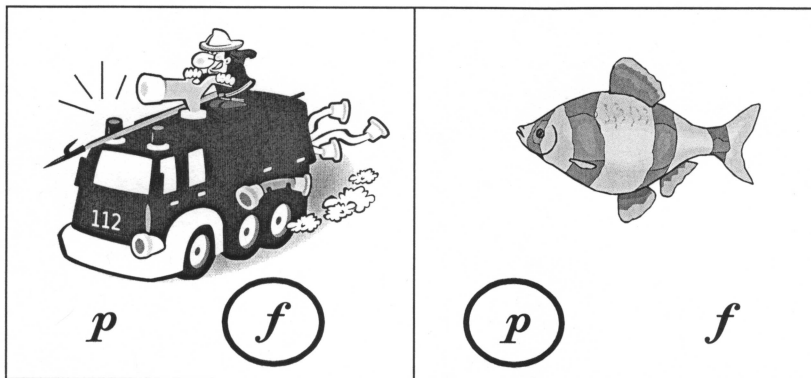
10. For each picture below:

A. Circle **f** if the picture is something that sounds loud.

- 3 pts. (3)

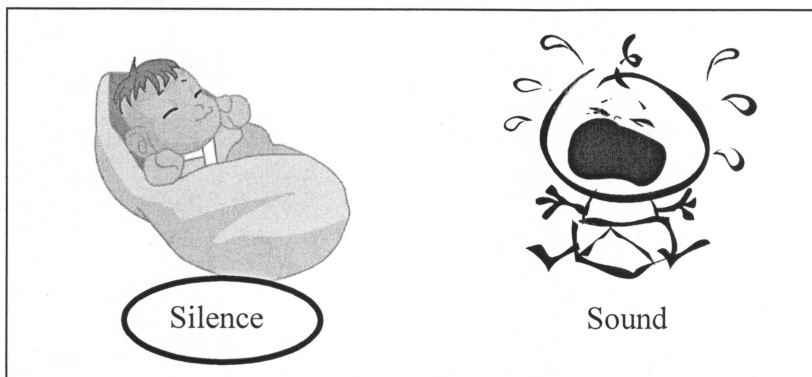
B. Circle **p** if the picture is something that sounds soft.

- 3 pts. (3)



11. Circle the correct answer. A quarter rest  is a symbol for:

- 3 pts. (3)



12. Fill in the note head to make a quarter note.

- 2 pts. (2)



Level A-SAMPLE-ANSWER KEY

SAMPLE - Level A - page 4

13. Circle one group of letters that correctly shows the complete music alphabet.

- 4 pts. (4)

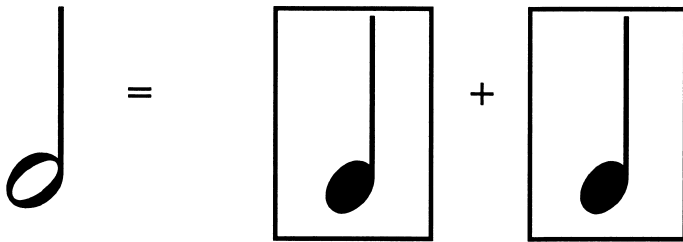
A B D F C B G

A B C D E F G

A C D B G A E

14. Draw one note in the empty box to make a musical math problem.

- 3 pts. (3)



15. Draw a line from each musical symbol to the correct name.

- 1 pt. each (3)

